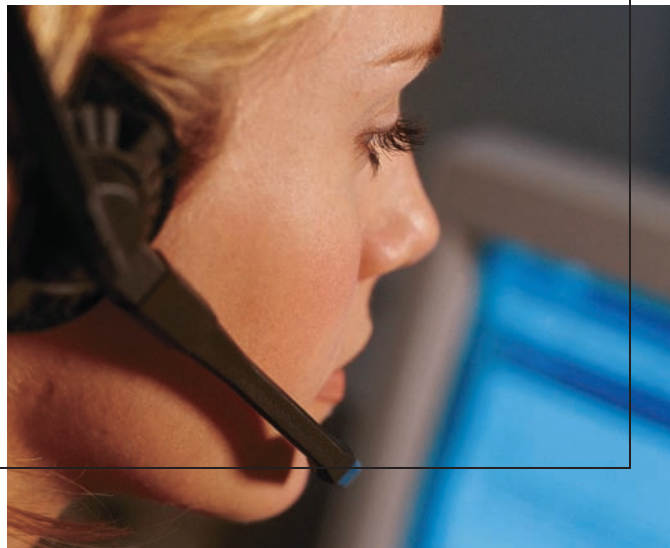


Meeting the
demands
of today's
public safety
environment



A fault resilient solution specifically designed to meet the needs of community communication centers.

Ease of Use

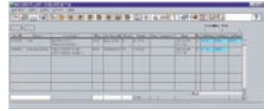
- ▶ Detailed information on call locations provides flexibility in creating response requirements and enhances officer safety
- ▶ Single function dispatching combined with pre-defined response attributes provides highly efficient and accurate resource assignment
- ▶ Resource availability prompting notifies the dispatcher as units become available that fulfill the response requirements of pending incidents
- ▶ No additional programming or downtime for configuration changes
- ▶ Incidents can easily be “tagged” for follow-up and referral to outside agencies
- ▶ Tagging of Special Locations are easily applied, creating accessible, highly visible notations for Call-Takers and Dispatchers

Maximum System Efficiency

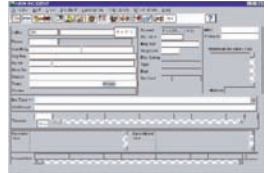
- ▶ Provides 24/7/365 availability for mission critical Police, Fire and EMS (Emergency Medical Services) dispatch centers
- ▶ Product Migration and upgrade plans are implemented with minimal impact to the operations of the center
- ▶ Geofile updates can be implemented “on-the-fly” making additions/corrections immediately available to all workstations
- ▶ Uses existing Printrak CAD (Computer Aided Dispatch) proven ancillary products for Automatic Vehicle Location (AVL), database querying and mobile data applications.

ProCAD™ PRODUCT HIGHLIGHTS

FEATURE	BENEFIT
Oracle relational database	Industry standard database that easily allows for data access and reporting
Sun Solaris server environment	Open architecture providing high availability. Scalable platform that can be used in small to large sized environments
Fault resilient solution	Provides high availability
Integrated GIS	Reducing entry errors and time at entry with immediate validation. Allows operators to visualize current resources and incidents
Open architecture providing flexibility for interfacing to future systems	Provides a migration path for future enhancements while reducing additional system related costs
A range of established core products for the police, fire or EMS service	Commercial off-the-shelf modules allow you to select and choose features which are right for you
A Division of Motorola, providing a sound and stable financial base	We'll always be here when you need us



Incident Lists & Resource Lists provide real time views for the incidents and units that are being monitored. Filtering and configuration of these lists enables each user and agency to establish the views that best meet their business needs.



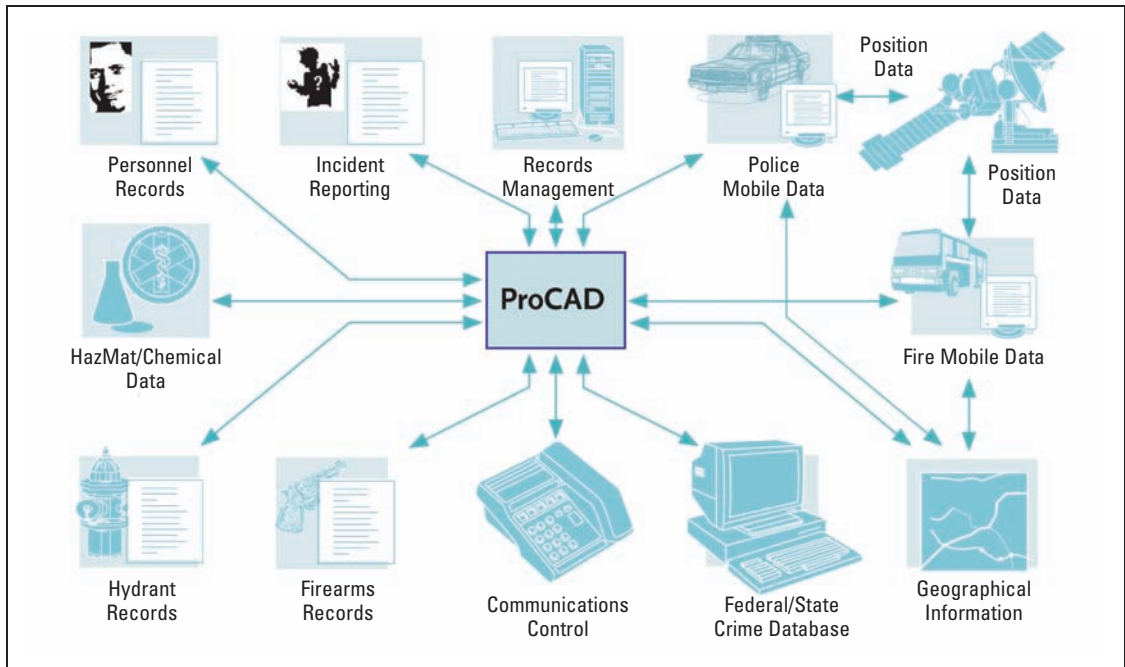
Call Taking and Incident Creation – ProCAD interfaces directly to the phone system and automatically captures the callers phone number and address details. A comprehensive geofile provides detailed map based address/location information for immediate address verification.



Allocation of Resources – A single key-stroke presents a list of resources, that fulfill the response requirements, their status, and current assignments. The operator accepts or modifies the resources to respond to the incident.



Dispatcher Action Plans – The system includes a utility to define a list of actions (action or contingency plans) that a dispatcher must perform once an incident is dispatched. This list of actions either for the specific incident type, or based on location, are available and linked to the incident so that the dispatcher can complete the actions in compliance with SOPs.



motorola.com/printrak

MOTOROLA, INC.
Latin American Countries Region
789 International Parkway
Sunrise, FL 33325
USA
954-723-8959

MOTOROLA DE LOS ANDES C.A.
Ave. Francisco de Miranda
Centro Lido, Torre A
Piso 15, El Rosal
Caracas, 1060 Venezuela
58212-901-4600

MOTOROLA CHILE
Ave. Nueva Tajamar 481
Edif. World Trade Center
Of. 1702, Torre Norte
Las Condes
Santiago, Chile
562-338-9000

MOTOROLA DE COSTA RICA
Oficentro Plaza Mayor
Piso 3, Rohrmoser
San José, Costa Rica
506-296-5385

MOTOROLA DE MEXICO, S.A.
Calle Bosques de Alisos #125
Col. Bosques de Las Lomas
05120 México D.F.
México
52-555-257-6700

MOTOROLA DE ARGENTINA
Ave. del Libertador 1855
B1638BGE, Vicente Lopez
Buenos Aires, Argentina
5411-4317-5300

MOTOROLA DO BRASIL LTDA.
Rua Paes Leme, 524, 13 Andar
05424-010 São Paulo, Brasil
5511-3030-5000

MOTOROLA DE COLOMBIA, LTDA.
Torre Banco Ganadero
Carrera 7 #71-52
Torre A, Oficina 403
Bogotá, Colombia
571-376-6990

MOTOROLA DEL ECUADOR
Ave. 12 de Octubre y Cordero
Edif. World Trade Center
Ofic 807, Torre B
Quito, Ecuador
593-2256-5238

MOTOROLA DEL PERU, S.A.
Ave. República de Panama 3535
Piso 11, San Isidro
Lima 27, Peru
511-211-0700

MOTOROLA, [™] and all other trademarks indicated as such herein are trademarks of Motorola, Inc. © Reg. U.S. Pat. & Tm. Off.
© 2002 Motorola, Inc. All rights reserved. Printed in the U.S.A.

